

2025

G E O M E T R I C



PRODUCT
CATALOG

MANUFACTURER OF
DECORATIVE PRIVACY WINDOW FILMS

decorativefilms 



We're changing the way the world sees windows.

Whether you're looking to customize a space, add privacy, protect glass surfaces, improve security, or reduce heat and glare, our product catalog offers the solutions you need. Explore this book to find the perfect film for your next project. Then, follow the enclosed guidelines to picture, plan, and specify your next project.



▲ DECORATIVE FILMS

- Unparalleled quality at competitive prices
- Industry leading warranty
- Largest selection worldwide
- Helpful & knowledgeable support
- Try before you buy with free product samples
- Sold by the linear foot (only order what you need)
- Customizable
- Short lead times

SUSTAINABILITY,
SUPPORT, SPEED

 MADE IN
USA
and enjoyed worldwide.

KEEP IN MIND

KEEP BROWSING!

Additional photos, information, and styling ideas are available online. Visit [DecorativeFilm.com](https://www.decorativefilm.com) or scan QR code (opposite) to take your inspiration even further.

FREE SAMPLES

Find a few films you like? Order free 5"x7" samples and larger 8x10 multipacks of our most popular designs directly from each product page. See page 7 for more details, and to order multiple samples at a time.

CREATE AN ACCOUNT

Decorative Films is your project partner. Create an account to organize different projects easily, build a wishlist of favorite films, order samples, and reorder quickly. See page 6 for more details.

SHIPPING + AVAILABILITY

From skyscrapers to single windows, there's no limit to what we'll do for our customers. All films are kept in stock and ready to ship worldwide out of our Maryland warehouse. Most orders ship within 24 hours of order receipt.

WARRANTY

We offer an industry-leading warranty program with every purchase that guarantees our products for up to 10 years with proof of purchase. Visit [DecorativeFilm.com](https://www.decorativefilm.com) for full warranty guidelines and limitations.

GLOBAL DEALER MAP

Are you an installer or window film professional looking to connect with Decorative Films customers in your area? Visit bit.ly/installermap or scan the QR code on page 7 to add your business to our interactive dealer map.

SUSTAINABILITY

We are committed to providing our customers with the highest quality window film while also prioritizing sustainable manufacturing practices. Our team is continuously exploring and experimenting with new technologies, such as our PVC-free base materials and sustainable adhesive coating formula, to improve product performance and reduce carbon emissions without compromising quality.

G E O M E T R I C

Transform your glass with modern and architecturally interesting designs from Decorative Films' Geometric Collection. This stunning collection features a variety of repeating shapes that can completely change the look and feel of paned surfaces, adding structure, balance, and harmony to your built environment.

The use of symmetry in these designs creates rich texture that forces the eye to acknowledge and appreciate the negative space created between the lines. These versatile designs can optimize privacy in a building's facade, an interior space, or as a simple decorative element, transforming interior and exterior glass from ordinary to extraordinary.

Geometric privacy films are the perfect solution to create extraordinary, elegant spaces that capture the eye's attention. Achieving your decorative privacy goals has never been easier with quality products from Decorative Films.



GEOMETRIC COLLECTION

LINES & STRIPES

- 33 . . . SX-1254 Reeded 1/2"
- 33 . . . SX-1262 Reeded 1/4"
- 34 . . . SX-1255 Reeded 1"
- 34 . . . SX-4804 Grey Bands
- 35 . . . SXC-3510 Frosted Stripes
- 35 . . . SX-C374 Etch Leise Stripes
- 36 . . . SX-C381 Etched Stripes 112
- 36 . . . SX-C382 Etched Stripes 1/2"
- 37 . . . SX-4803 Grey Stripes
- 37 . . . SXHP-2041 White Stripes 3/8"
- 38 . . . SXC-3511 Frosted Stripe
- 38 . . . SXC-1418 Frosted Stripes
- 39 . . . SX-3008 Mini Bars
- 39 . . . SX-4801 Thin Grey Lines
- 40 . . . SX-316132-V Frosted Stripes Vertical
- 40 . . . SXC-130SR White Stripe 1/8"
- 41 . . . SX-2006 White Stripes
- 41 . . . SX-5021 Two Tone Stripes
- 42 . . . SX-C378 Alternating Stripes
- 42 . . . SX-C384 Etched Stripes
- 43 . . . SX-9050 Ribbed Glass Clear
- 43 . . . SX-9060 Ribbed Glass Frosted
- 44 . . . SX-C380 Organic Etch Stripes
- 44 . . . SGV-6613 Frosted Strié
- 45 . . . SX-C376 Etchnwhite Random Lines
- 45 . . . SX-1801 White Random Lines
- 46 . . . SX-1800 Bronze Random Lines
- 46 . . . SX-2007 White Stripes
- 47 . . . SX-C373 Acid Etch Stripes
- 47 . . . SX-316132-H Frosted Stripes Horizontal
- 48 . . . SXC-1419 White Frosted Stripes
- 48 . . . SX-3006 White Frosted Mini Blind
- 49 . . . SX-C386 Pixella
- 49 . . . SGV-6601 Master Ray
- 50 . . . SX-C375 Paracelli Mini Blind
- 50 . . . SXC-131-60 Frosted Short Stripe Mini Blind
- 51 . . . SX-9100 Chicago
- 51 . . . SX-3148 Gotham
- 52 . . . SGC-55 Burlap Stripe
- 52 . . . SX-1580 Thatch Frost

SQUARES

- 53 . . . SX-1710 Fresnel Squares
- 53 . . . SXG-9118 Clear Frosted Squares
- 54 . . . SX-22564 Frosted Squares
- 54 . . . SXC-4410 Frosted Squares
- 55 . . . SX-4800 Matte Grey Squares
- 55 . . . SX-4647 Cool Grey Matte Squares
- 56 . . . SX-4802 Grey Squares

- 56 . . . SX-1700 Sand Blast Squares
- 57 . . . SX-C385 Etched Squares 1 3/16"
- 57 . . . SX-1164 Frosted Squares
- 58 . . . SX-5013 Two Tone Squares
- 58 . . . SGD-6007 Gridlock
- 59 . . . SGV-6610 Frosted Ice Cubes
- 59 . . . SX-1212 Wire Glass
- 60 . . . SX-932932 Frosted Squares
- 60 . . . SX-C372 White Cubes
- 61 . . . SX-1513 Cut Glass Mosaic
- 61 . . . SX-1523 Big City Lights
- 62 . . . SX-1462 Pixels
- 62 . . . SX-1257 Glass Block 6"
- 63 . . . SX-1258 Glass Block 4"
- 63 . . . SX-1281 Crystal Weave 1/2"
- 64 . . . SX-1282 Crystal Weave 1"
- 64 . . . SGC-05 Gridlock Gold

RECTANGLES

- 65 . . . SX-14316 Frosted Rectangles
- 65 . . . SGC-25 Merchant

RADIAL

- 66 . . . SX-1720 Spheres
- 66 . . . SX-C333 Pin Point
- 67 . . . SX-C362 Dot Screen 16
- 67 . . . SX-C370 Dot Screen 18
- 68 . . . SXD-1616 Dots
- 68 . . . SXD-1818 Dots
- 69 . . . SX-C391 Swiss
- 69 . . . SX-C392 Alps
- 70 . . . SXJ-0584 Etch Dots Solid
- 70 . . . SGD-6008 Glazed Circles

FACETS

- 71 . . . SGC-6523 Coventry
- 71 . . . SX-C371 Structure
- 72 . . . SGV-6614 Fleur De Lis
- 72 . . . SX-1109 Cut Glass Neptune
- 73 . . . SXW-08 Frosted Jacks
- 73 . . . SX-1552 Crystal Jacks

DIAMONDS

- 74 . . . SX-3150 Geometric
- 74 . . . SX-1730 Rhombus
- 75 . . . SX-1550 Frosted Lattice
- 75 . . . SX-1551 Crystal Lattice
- 76 . . . SGD-6011 Olde English
- 76 . . . SGV-6608 Frosted Diamond

The most versatile solution for all your specifying needs.

Decorative privacy window films are an energy-efficient, cost-effective, and versatile solution for controlling light filtration, offering surface protection, providing privacy, and ensuring peace of mind. Our unique and intelligent designs and functional products provide safe solutions for schools, healthcare facilities, major transportation hubs, and more. Whether you're retrofitting a current building or working with new construction, our decorative privacy window films offer flexible and cost-saving solutions to common design needs for interior and exterior installation. With over 700 skus and endless custom design opportunities, our product applications are limitless. Look no further than film for your architectural and design needs.



At Decorative Films, we pride ourselves on being an industry leader in the manufacturing and distribution of window films for various applications such as design, solar control, sustainability, and privacy. Family-founded with over 40 years of experience, our business has served residential and professional customers in the glass coating and solar control window tinting industries since 1979. Our trusted brands, including SOLYX®, SimGlass®, UltraCool®, UltraSafe®, UltraGreen®, and UltraGlare® films, provide affordable, approachable solutions to common architectural and design requests.

Decorative Films is renowned for delivering remarkable product quality and unparalleled customer support. With a sales and installation network of over 2,850 dealers throughout the USA, as well as major global distributors in Europe, the Middle East, Italy, India, and Australia, our team is devoted to product innovation, upholding high-quality standards, manufacturing efficiency, and providing a diverse product lineup. Our reputation precedes us as a leader in privacy window film solutions, offering various applications and made-to-order designs that cater to the varied needs of their customers. This is exemplified by our extensive portfolio of products, consistent stock position of more than 50,000 rolls of ready-to-ship film, and a noteworthy customer list, including household names like Microsoft, Apple, Walmart, Bank of America, ABC, Fox, and Disney.

No matter what your solar control, privacy, or design challenge may be, whether you're seeking solutions for new construction, retrofitting, or renovations, we are confident that our films can provide the solution you need. Our films offer year-round beauty, lifelong durability, and nearly limitless design possibilities—all delivered quickly and with cost-effective pricing. At Decorative Films, we see windows in a whole new light. And decade after decade, we're working hard to help our customers do the same.

Decorative Films is proudly USA-designed and manufactured, with an extensive selection of products solely fabricated and fulfilled from its headquarters in Frederick, Maryland. Our company exists largely to support the amazing, hardworking team behind the scenes in our warehouses, offices, and production lines. Every order received contributes to the prosperity of our employees and their family members. We know you have a choice of where you shop and specify; thank you for supporting our team and trusting us with your decorative privacy needs.

SPECIFYING & ORDERING FILM

HOW TO USE THIS BOOK

Enclosed are the top-selling patterns in our Geometric collection. The front of the book showcases the ten most popular geometric patterns, each featuring a sample pocket to make specifying a breeze. The remaining top sellers in this category are located on the pages behind these pockets. To view our full collection, please visit [decorativefilm.com/geometric](https://www.decorativefilm.com/geometric) or scan the QR code below. Need a place to store other geometric pattern samples? We've added an extra sample pocket to the back of the book for your convenience. To request additional books featuring our other window film categories, please visit <https://www.decorativefilm.com/accessories-solyx-catalogs> or view our collection catalogs digitally.

SETTING UP AN ACCOUNT

To take advantage of these benefits, visit <https://bit.ly/decfilmswholesale> and sign up for a free wholesale account for commercial and industry professionals. There, you can view a digital version of our catalogs, order samples, receive specialty pricing, and learn more about our products and services. For residential customers, visit <https://www.decorativefilm.com/create-an-account> to set up an account.

CHECKING SPECS + SPECIFYING FILM

We're here to make specifying as simple and streamlined as possible. All films' full specifications and technical data are available online. For film costs, opacity, durability, fire ratings, size options, and more, review the individual product pages at [DecorativeFilm.com](https://www.decorativefilm.com) or by scanning the associated QR code on products featured in this book. If you can't find what you need on our site or would like to place a custom film order, contact our dedicated support team at info@decorativefilm.com or by phone at 888-657-5224 x1.



▲ To view the entire Geometric Collection, visit [DecorativeFilm.com/geometric](https://www.decorativefilm.com/geometric)



▲ To view available catalogs, visit [DecorativeFilm.com/accessories-solyx-catalogs](https://www.decorativefilm.com/accessories-solyx-catalogs)



▲ To set up your wholesale account, visit <https://bit.ly/decfilmswholesale>



Ordering Samples

We understand that our customers' time is valuable, and a quick turnaround can be a deciding factor in winning a project bid. That's why we offer professional and industry customers 5x7 product samples and expedited 2-day shipping at no charge. For everyone else, we offer the first five samples free, with discounted priority shipping rates.

This book is one of several new product catalogs, each organized by collection family and preloaded with larger-format 8x10 samples of our most popular films. Refills and multipacks of these films and other best-selling patterns are available upon request, with free 2-day shipping.



Ready To Order?



▲ To browse our products and place an order, visit DecorativeFilm.com



▲ To request multiple samples, visit bit.ly/specbooksamples



▲ Get connected with installers in your area or update your listing at bit.ly/installermap

SOLYX iQ

Custom solutions, endless possibilities.

Our Solyx iQ custom-made films give you the freedom to create something unique. With our large-format production, we can produce seamlessly repeatable patterns, perfectly smooth fading gradients, and paneled-out graphics in a variety of colors, sizes, and opacities. When it comes to custom window film, no other company compares. Bring your one-of-a-kind design to life with Solyx iQ by Decorative Films.

ANY REQUEST, EVERY BUDGET

- **Extended Warranty:** All Solyx iQ projects come with a 10-year commercial warranty for interior applications.
- **Exceptional Support:** Our in-house art department offers support every step of the way.
- **Cost-Effective:** Create bespoke designs for a fraction of the cost of custom glass or window shades.
- **Surface Protection:** Protect what matters most with features like UV coatings and shatter-resistant safety films.
- **Non-invasive:** Our films have a clean, removable adhesive system, so you can feel safe knowing they will not harm your glass.
- **Easy Retrofit & Install:** Custom films are long-lasting and easy to install, making them a perfect solution for retrofitting spaces with designs that can be replaced or redesigned later.
- **Optical Clarity -** Unlike the competition, our base films are made of optically clear, sustainable polyester – not vinyl- ensuring your design has a crystal-clear finish.
- **Fast Turnaround:** Our facilities can produce more than 15,000 square feet of custom-printed film on a given day, meaning lead times for most projects are days, not weeks.

Specifying Custom Film



Custom-printed glass films are a surprisingly easy way to transform ordinary glass into architectural centerpieces.

When creating a custom film, the customer's request must contain the project scope, design, and finish type before samples or a unique product code can be issued for the project specification.



A TRUSTED NAME IN THE INDUSTRY.

We have a vast client base spanning several industries. Here are a few of our trusted partners:





B R I G H T

I D E A S

A W A I T



A SGD-6011
Olde English



B SX-1730
Rhombus



C SX-C374
Etch Leise Stripes



D



E



F



G

D SX-1254
½" Reeded Glass

E SX-1255
Reeded Glass 1"

F SX-1550
Frosted Lattice

G SXC-4410
Frosted Squares



A



B



C



E



D

A SXC-1418
Frosted Stripes

B SXC-3511
Frosted Stripe

C SX-1580
Thatch Frost

D SGC-6523
Coventry

E SX-1513
Cut Glass Mosaic

Reeded Glass 1/2" SX-1254


Solyx SimGlas® SX-1254 Reeded Glass adhesive film simulates real reeded glass. The bars are 1/2" wide and the pattern direction runs down the length of the roll. The clear glasslike distortion texture provides a semi-private view. It is often used in restaurants for booth divider privacy and is a fan favorite for architectural applications.



SPECIFICATIONS

Product Code	SX-1254
Product Family	Geometric
Film Type	Polyester
Usage	Interior
Roll Width(s)	12", 48", 60"
Thickness	2 mil
Visible Light Transmission	61%
UV Rejection	43%



PRODUCT DETAILS & FREE SAMPLES 

Design Notes

Project: _____

Date: _____

Decorative Film: _____

Notes: _____

Project: _____

Date: _____

Decorative Film: _____

Notes: _____

Project: _____

Date: _____

Decorative Film: _____

Notes: _____

Project: _____

Date: _____

Decorative Film: _____

Notes: _____

Project: _____

Date: _____

Decorative Film: _____

Notes: _____

Post a photo
on Instagram!

@DECORATIVEFILMS
#DECORATIVEFILMSDIY



Project: _____

Date: _____

Decorative Film: _____

Notes: _____

Project: _____

Date: _____

Decorative Film: _____

Notes: _____

Project: _____

Date: _____

Decorative Film: _____

Notes: _____

Reeded Glass 1" SX-1255


Solyx SimGlas® SX-1255 1" Reeded Glass adhesive film simulates real reeded glass. Bands are 1" wide with a vertical band direction that runs down the length of the roll. It effectively obscures visibility while allowing excellent light transmission.

SPECIFICATIONS



Product Code	SX-1255
Product Family	Geometric
Film Type	Polyester
Usage	Interior
Roll Width(s)	60"
Thickness	2 mil
Visible Light Transmission	53%
UV Rejection	72%



PRODUCT DETAILS & FREE SAMPLES 

Design Notes

Project: _____

Date: _____

Decorative Film: _____

Notes: _____

Project: _____

Date: _____

Decorative Film: _____

Notes: _____

Project: _____

Date: _____

Decorative Film: _____

Notes: _____

Project: _____

Date: _____

Decorative Film: _____

Notes: _____

Project: _____

Date: _____

Decorative Film: _____

Notes: _____

Post a photo
on Instagram!

@DECORATIVEFILMS
#DECORATIVEFILMSDIY



Project: _____

Date: _____

Decorative Film: _____

Notes: _____

Project: _____

Date: _____

Decorative Film: _____

Notes: _____

Project: _____

Date: _____

Decorative Film: _____

Notes: _____

Etch Leise Stripes **SX-C374**


Solyx® SX-C374 Etch Leise Stripes is a durable polyester film with 31mm etched stripes separated by 1.7mm clear spacing running down along the length of the roll. It provides good light transmission and semi-obscured visibility.

SPECIFICATIONS



Product Code	SX-C374
Product Family	Geometric
Film Type	Polyester
Usage	Interior
Roll Width(s)	60"
Thickness	2 mil
Visible Light Transmission	57%
UV Rejection	62%



PRODUCT DETAILS & FREE SAMPLES 

Design Notes

Project: _____

Date: _____

Decorative Film: _____

Notes: _____

Project: _____

Date: _____

Decorative Film: _____

Notes: _____

Project: _____

Date: _____

Decorative Film: _____

Notes: _____

Project: _____

Date: _____

Decorative Film: _____

Notes: _____

Project: _____

Date: _____

Decorative Film: _____

Notes: _____

Post a photo
on Instagram!

@DECORATIVEFILMS
#DECORATIVEFILMSDIY



Project: _____

Date: _____

Decorative Film: _____

Notes: _____

Project: _____

Date: _____

Decorative Film: _____

Notes: _____

Project: _____

Date: _____

Decorative Film: _____

Notes: _____

Frosted Stripe **SXC-3511**

Solyx® SXC-3511 Frosted Stripe is a durable polyester film with 3/8" semi-opaque stripes separated by 5/32" clear spacing. Stripes run down the length of the roll. This film is ideal for partially obscuring direct visibility, allowing excellent light transmission.



SPECIFICATIONS

Product Code	SXC-3511
Product Family	Geometric
Film Type	Polyester
Usage	Interior
Roll Width(s)	60"
Thickness	2.5 mil
Visible Light Transmission	62%
UV Rejection	71%



PRODUCT DETAILS & FREE SAMPLES 

Design Notes

Project: _____

Date: _____

Decorative Film: _____

Notes: _____

Project: _____

Date: _____

Decorative Film: _____

Notes: _____

Project: _____

Date: _____

Decorative Film: _____

Notes: _____

Project: _____

Date: _____

Decorative Film: _____

Notes: _____

Project: _____

Date: _____

Decorative Film: _____

Notes: _____

Post a photo
on Instagram!

@DECORATIVEFILMS

#DECORATIVEFILMSDIY



Project: _____

Date: _____

Decorative Film: _____

Notes: _____

Project: _____

Date: _____

Decorative Film: _____

Notes: _____

Project: _____

Date: _____

Decorative Film: _____

Notes: _____


Frosted Strié **SGV-6613**

Solyx® SGV-6613 Frosted Strié is comprised of soft, frosted strié lines between 1mm and 7mm in thickness, embossed on translucent film. It is an attractive and durable film that provides semi-private distraction banding.

SPECIFICATIONS

Product Code	SGV-6613
Product Family	Geometric
Film Type	Vinyl
Usage	Interior
Roll Width(s)	48"
Thickness	3-4 mil
Visible Light Transmission	77%
UV Rejection	34%



PRODUCT DETAILS & FREE SAMPLES 

Design Notes

Project: _____

Date: _____

Decorative Film: _____

Notes: _____

Project: _____

Date: _____

Decorative Film: _____

Notes: _____

Project: _____

Date: _____

Decorative Film: _____

Notes: _____

Project: _____

Date: _____

Decorative Film: _____

Notes: _____

Project: _____

Date: _____

Decorative Film: _____

Notes: _____

Post a photo
on Instagram!

@DECORATIVEFILMS
#DECORATIVEFILMSDIY



Project: _____

Date: _____

Decorative Film: _____

Notes: _____

Project: _____

Date: _____

Decorative Film: _____

Notes: _____

Project: _____

Date: _____

Decorative Film: _____

Notes: _____

White Random Lines SX-1801

Solyx® SX-1801 White Random Lines features a decorative line pattern in varying widths, opacities, and shades of white. This attractive design achieves an effective visual distraction with semi-private views, with lines running the entire length of the roll. It's a favorite for offices and architectural applications.



SPECIFICATIONS

Product Code	SX-1801
Product Family	Geometric
Film Type	Polyester
Usage	Interior
Roll Width(s)	60"
Thickness	2 mil
Visible Light Transmission	38%
UV Rejection	72%



PRODUCT DETAILS & FREE SAMPLES 

Design Notes

Project: _____

Date: _____

Decorative Film: _____

Notes: _____

Project: _____

Date: _____

Decorative Film: _____

Notes: _____

Project: _____

Date: _____

Decorative Film: _____

Notes: _____

Project: _____

Date: _____

Decorative Film: _____

Notes: _____

Project: _____

Date: _____

Decorative Film: _____

Notes: _____

Post a photo
on Instagram!

@DECORATIVEFILMS

#DECORATIVEFILMSDIY



Project: _____

Date: _____

Decorative Film: _____

Notes: _____

Project: _____

Date: _____

Decorative Film: _____

Notes: _____

Project: _____

Date: _____

Decorative Film: _____

Notes: _____

Frosted Squares **SXC- 4410**

Solyx® SXC-4410 Frosted Squares is a beautiful polyester film comprised of 1 1/16" frosted squares separated by 3/8" clear spacing. The symmetry of the frosted squares and sizable clear gridding make this product an ideal solution for obscuring direct visibility without impacting light transmission.



SPECIFICATIONS

Product Code	SGV-6613
Product Family	Geometric
Film Type	Polyester
Usage	Interior
Roll Width(s)	60"
Thickness	2.5 mil
Visible Light Transmission	41%
UV Rejection	66%



PRODUCT DETAILS & FREE SAMPLES 

Design Notes

Project: _____

Date: _____

Decorative Film: _____

Notes: _____

Project: _____

Date: _____

Decorative Film: _____

Notes: _____

Project: _____

Date: _____

Decorative Film: _____

Notes: _____

Project: _____

Date: _____

Decorative Film: _____

Notes: _____

Project: _____

Date: _____

Decorative Film: _____

Notes: _____

Post a photo
on Instagram!

@DECORATIVEFILMS
#DECORATIVEFILMSDIY



Project: _____

Date: _____

Decorative Film: _____

Notes: _____

Project: _____

Date: _____

Decorative Film: _____

Notes: _____

Project: _____

Date: _____

Decorative Film: _____

Notes: _____

Cut Glass Mosaic **SX-1513**

Solyx® SX-1513 Cut Glass Mosaic is a colorless, embossed vinyl film that refracts light between soft, translucent $\frac{3}{8}$ " squares. The tile-like textured design scatters visible light to create a beautiful prismatic effect that changes with the angle and time of day. It is an excellent solution for obscuring direct visibility while facilitating excellent light transmission. This film is also available in a static cling version, SX-SC513 Mosaic.

SPECIFICATIONS

Product Code	SX-1513
Product Family	Geometric
Film Type	Vinyl
Usage	Interior
Roll Width(s)	24", 48"
Thickness	10 mil
Visible Light Transmission	36%
UV Rejection	81%



PRODUCT DETAILS & FREE SAMPLES 

Design Notes

Project: _____

Date: _____

Decorative Film: _____

Notes: _____

Project: _____

Date: _____

Decorative Film: _____

Notes: _____

Project: _____

Date: _____

Decorative Film: _____

Notes: _____

Project: _____

Date: _____

Decorative Film: _____

Notes: _____

Project: _____

Date: _____

Decorative Film: _____

Notes: _____

Post a photo
on Instagram!

@DECORATIVEFILMS

#DECORATIVEFILMSDIY



Project: _____

Date: _____

Decorative Film: _____

Notes: _____

Project: _____

Date: _____

Decorative Film: _____

Notes: _____

Project: _____

Date: _____

Decorative Film: _____

Notes: _____

Alps SX-C392

Solyx® SX-C392 Alps is a semi-transparent, dot screen pattern on a lightly etched film. The optically clear, diagonally arranged design features 1/8" dots with 1/4" spacing, offering semi-transparency and visual interest in any space.



SPECIFICATIONS

Product Code	SX-C392
Product Family	Geometric
Film Type	Polyester
Usage	Interior
Roll Width(s)	60"
Thickness	2 mil
Visible Light Transmission	56%
UV Rejection	53%



PRODUCT DETAILS & FREE SAMPLES 

Design Notes

Project: _____

Date: _____

Decorative Film: _____

Notes: _____

Project: _____

Date: _____

Decorative Film: _____

Notes: _____

Project: _____

Date: _____

Decorative Film: _____

Notes: _____

Project: _____

Date: _____

Decorative Film: _____

Notes: _____

Project: _____

Date: _____

Decorative Film: _____

Notes: _____

Post a photo
on Instagram!

@DECORATIVEFILMS

#DECORATIVEFILMSDIY



Project: _____

Date: _____

Decorative Film: _____

Notes: _____

Project: _____

Date: _____

Decorative Film: _____

Notes: _____

Project: _____

Date: _____

Decorative Film: _____

Notes: _____

Thatch Frost **SX-1580**

Solyx® SX-1580 Thatch Frost features a strikingly attractive and simple pattern of clear, intersecting lines on a frosted background. Thatched lines taper to a point, creating creating visual intrigue and semi-private views.

SPECIFICATIONS

Product Code	SX-1580
Product Family	Geometric
Film Type	Vinyl
Usage	Interior and Exterior
Roll Width(s)	48"
Thickness	3-4 mil
Visible Light Transmission	79%
UV Rejection	32%



PRODUCT DETAILS & FREE SAMPLES 

Design Notes

Project: _____

Date: _____

Decorative Film: _____

Notes: _____

Project: _____

Date: _____

Decorative Film: _____

Notes: _____

Project: _____

Date: _____

Decorative Film: _____

Notes: _____

Project: _____

Date: _____

Decorative Film: _____

Notes: _____

Project: _____

Date: _____

Decorative Film: _____

Notes: _____

Post a photo
on Instagram!

@DECORATIVEFILMS

#DECORATIVEFILMSDIY



Project: _____

Date: _____

Decorative Film: _____

Notes: _____

Project: _____

Date: _____

Decorative Film: _____

Notes: _____

Project: _____

Date: _____

Decorative Film: _____

Notes: _____

Reeded Glass 1/2" SX-1254

See a
SAMPLE
on
page 13

Solyx SimGlas® SX-1254 Reeded Glass adhesive film simulates real reeded glass. The bars are 1/2" wide and the pattern direction runs down the length of the roll. The clear glasslike distortion texture provides a semi-private view. It is often used in restaurants for booth divider privacy and is a fan favorite for architectural applications.



SPECIFICATIONS

Product Code	SX-1254
Product Family	Geometric
Film Type	Polyester
Usage	Interior
Roll Width(s)	12", 48", 60"
Thickness	2 mil
Visible Light Transmission	61%
UV Rejection	43%



ORDER PRODUCTS & SAMPLES 



Reeded Glass 1/4" SX-1262

Solyx SimGlas® SX-1262 1/4" Reeded Glass adhesive film simulates real reeded glass. The bars are 1/4" wide and the pattern direction runs down the length of the roll. The clear glasslike distortion texture provides a semi-private view. Often used in restaurants for booth divider privacy.



SPECIFICATIONS

Product Code	SX-1262
Product Family	Geometric
Film Type	Polyester
Usage	Interior
Roll Width(s)	54"
Thickness	2 mil
Visible Light Transmission	61%
UV Rejection	57%



ORDER PRODUCTS & SAMPLES 

DECORATIVEFILM.COM

Reeded Glass 1" SX-1255

See a
SAMPLE
on
page 15

Solyx SimGlas® SX-1255 1" Reeded Glass adhesive film simulates real reeded glass. Bands are 1" wide with a vertical band direction that runs down the length of the roll. It effectively obscures visibility while allowing excellent light transmission.



SPECIFICATIONS

Product Code	SX-1255
Product Family	Geometric
Film Type	Polyester
Usage	Interior
Roll Width(s)	60"
Thickness	2 mil
Visible Light Transmission	70%
UV Rejection	98%



ORDER PRODUCTS & SAMPLES



Grey Bands SX-4804

Solyx® SX-4804 Grey Bands is a glossy polyester film with a pattern of 1 3/4" translucent grey bands and 7/16" clear spacing which run down the length of the roll. The design features alternating grey translucent stripes, providing a stylish balance of privacy and natural light.



SPECIFICATIONS

Product Code	SX-4804
Product Family	Geometric
Film Type	Polyester
Usage	Interior
Roll Width(s)	60"
Thickness	2 mil
Visible Light Transmission	49%
UV Rejection	56%



ORDER PRODUCTS & SAMPLES

Frosted Stripes SXC-3510

Solyx® SXC-3510 Frosted Stripes is a durable, optically clear, polyester film with alternating 1 3/8" frosted stripes and 3/8" clear spacing which run down the length of the roll. This design combines privacy with contemporary elegance, featuring evenly spaced grey translucent bands that allow soft light to filter through while ensuring a degree of privacy.



SPECIFICATIONS

Product Code	SXC-3510
Product Family	Geometric
Film Type	Polyester
Usage	Interior
Roll Width(s)	60"
Thickness	2.5 mil
Visible Light Transmission	60%
UV Rejection	45%



ORDER PRODUCTS & SAMPLES 

Etch Leise Stripes SX-C374

See a
SAMPLE
on
page 17



Solyx® SX-C374 Etch Leise Stripes is a durable polyester film with 31mm etched stripes separated by 1.7mm clear spacing running down along the length of the roll. It provides good light transmission and semi-obscured visibility.



SPECIFICATIONS

Product Code	SX-C374
Product Family	Geometric
Film Type	Polyester
Usage	Interior
Roll Width(s)	60"
Thickness	2 mil
Visible Light Transmission	57%
UV Rejection	62%



ORDER PRODUCTS & SAMPLES 

Etched Stripes 1 1/2 SX-C381

Solyx® SX-C381 Etched Stripes 1 1/2 is a textured, clear polyester film with a pattern of 1" etched stripes and clear 1/2" spacing that runs vertically down the length of the roll. The design features a sequence of varied-width opaque white and translucent grey stripes that alternately cover the surface, combining functionality with a modern aesthetic.



SPECIFICATIONS

Product Code	SX-C381
Product Family	Geometric
Film Type	Polyester
Usage	Interior
Roll Width(s)	48"
Thickness	2 mil
Visible Light Transmission	60%
UV Rejection	49%



ORDER PRODUCTS & SAMPLES



Etched Stripes 1/2" SX-C382

Solyx® SX-C382 Etched Stripes 1/2" is a lightly textured striped film with alternating 1/2" etched and clear stripes running vertically down the length of the roll. It provides semi-obscurety while maintaining excellent light transmission.



SPECIFICATIONS

Product Code	SX-C382
Product Family	Geometric
Film Type	Polyester
Usage	Interior
Roll Width(s)	48"
Thickness	2 mil
Visible Light Transmission	60%
UV Rejection	49%



ORDER PRODUCTS & SAMPLES

Grey Stripes SX-4803

SX-4803 Grey Stripes is a glossy polyester film with a pattern of translucent $\frac{1}{2}$ " grey stripes and $\frac{1}{4}$ " clear spacing which runs vertically down the length of the roll. The pattern features uniform alternating dark grey and transparent stripes, providing an elegant and modern look that complements any decor.



SPECIFICATIONS

Product Code	SX-4803
Product Family	Geometric
Film Type	Polyester
Usage	Interior
Roll Width(s)	60"
Thickness	2 mil
Visible Light Transmission	49%
UV Rejection	57%



ORDER PRODUCTS & SAMPLES 



White Stripe $\frac{3}{8}$ " SXHP-2041

Solyx® SXHP-2041 White Stripe $\frac{3}{8}$ " is a polyester film with $\frac{3}{8}$ " white stripes and $\frac{1}{8}$ " clear spacing running down the length of the roll. A clean and basic design offering visual distraction that translates to semi-private views.



SPECIFICATIONS

Product Code	SXHP-2041
Product Family	Geometric
Film Type	Polyester
Usage	Interior
Roll Width(s)	60"
Thickness	1.5 mil
Visible Light Transmission	53%
UV Rejection	97%



ORDER PRODUCTS & SAMPLES 

Frosted Stripe SXC-3511

See a
SAMPLE
on
page 19

Solyx® SXC-3511 Frosted Stripe is a durable polyester film with $\frac{3}{8}$ " semi-opaque stripes separated by $\frac{5}{32}$ " clear spacing. Stripes run down the length of the roll. This film is ideal for partially obscuring direct visibility, allowing excellent light transmission.



SPECIFICATIONS

Product Code	SXC-3511
Product Family	Geometric
Film Type	Polyester
Usage	Interior
Roll Width(s)	60"
Thickness	2.5 mil
Visible Light Transmission	62%
UV Rejection	46%



ORDER PRODUCTS & SAMPLES



Frosted Stripes SXC-1418

Solyx® SXC-1418 Frosted Stripes is a durable, optically clear POLYESTER film with alternating $\frac{1}{4}$ " frosted stripes and $\frac{1}{8}$ " clear spacing running down the length of the roll. An ideal product for semi-obscuring direct visibility and allowing excellent light transmission.



SPECIFICATIONS

Product Code	SXC-1418
Product Family	Geometric
Film Type	Polyester
Usage	Interior
Roll Width(s)	60"
Thickness	2.5 mil
Visible Light Transmission	74%
UV Rejection	47%



ORDER PRODUCTS & SAMPLES

Mini Bars SX-3008

SX-3008 Mini Bars is a frosted, translucent, high-grade, embossed vinyl film that simulates small vertical mini blinds. This durable vinyl film has a decorative sandblasted surface and mini bar blind pattern with 1 cm gradient vertical stripes.

SPECIFICATIONS

Product Code	SX-3008
Product Family	Geometric
Film Type	Vinyl
Usage	Interior
Roll Width(s)	48"
Thickness	5 mil
Visible Light Transmission	47%
UV Rejection	99%



ORDER PRODUCTS & SAMPLES 



Thin Grey Lines SX-4801

Solyx® SX-4801 Thin Grey Lines is a polyester film with glossy grey $\frac{3}{16}$ " stripes and $\frac{1}{16}$ " clear spacing running down along the length of the roll. The thin bars offer a visual distraction, allowing ample light transmission.

SPECIFICATIONS



Product Code	SX-4801
Product Family	Geometric
Film Type	Polyester
Usage	Interior
Roll Width(s)	60"
Thickness	2 mil
Visible Light Transmission	30%
UV Rejection	55%



ORDER PRODUCTS & SAMPLES 

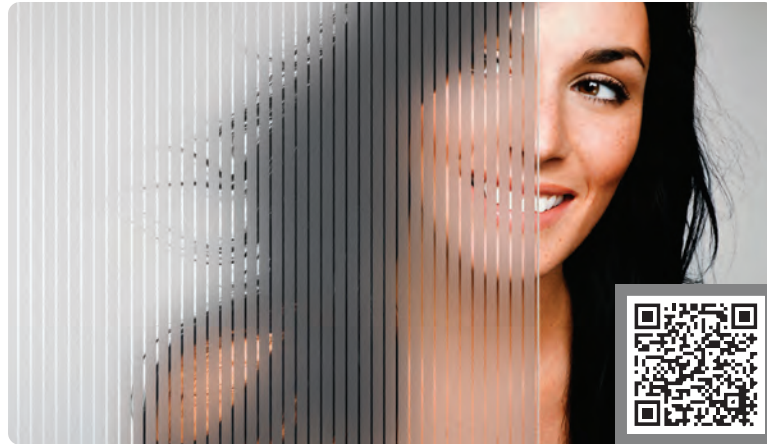
Frosted Stripes – Vertical SX-316132-V

Solyx® SX-316132 Frosted Stripes - Vertical is a great film for subtle privacy with $\frac{3}{16}$ " frosted stripes and $\frac{1}{32}$ " clear spacing. The stripes run vertically down the entire length of the roll.



SPECIFICATIONS

Product Code	SX-316132-Vertical
Product Family	Geometric
Film Type	Polyester
Usage	Interior
Roll Width(s)	48"
Thickness	2 mil
Visible Light Transmission	53%
UV Rejection	70%



ORDER PRODUCTS & SAMPLES



White Stripe $\frac{1}{8}$ " SXC-130SR

Solyx® SXC-130SR White Stripe $\frac{1}{8}$ " is a durable, optically clear POLYESTER film with $\frac{1}{8}$ " solid white stripes and $\frac{1}{8}$ " clear spacing running down the length of the roll. An attractive solution for conference room and architectural application.



SPECIFICATIONS

Product Code	SXC-130SR
Product Family	Geometric
Film Type	Polyester
Usage	Interior
Roll Width(s)	60"
Thickness	2.5 mil
Visible Light Transmission	52%
UV Rejection	47%



ORDER PRODUCTS & SAMPLES

White Stripes SX-2006

Solyx® SX-2006 White Stripes is a durable, optically clear POLYESTER film with $\frac{3}{16}$ " white stripes and $\frac{3}{16}$ " clear spacing running down the length of the roll.



SPECIFICATIONS

Product Code	SX-2006
Product Family	Geometric
Film Type	Polyester
Usage	Interior
Roll Width(s)	60"
Thickness	2.5 mil
Visible Light Transmission	49%
UV Rejection	60%



ORDER PRODUCTS & SAMPLES 



Two Tone Stripes SX-5021

Solyx® SX-5021 Two Tone Stripes is an attractive, durable polyester film designed with alternating $\frac{1}{8}$ " frosted white stripes and $\frac{1}{4}$ " frosted stripes on a transparent background. This film is ideal for privacy, decorative, or architectural applications.



SPECIFICATIONS

Product Code	SX-5021
Product Family	Geometric
Film Type	Polyester
Usage	Interior
Roll Width(s)	48"
Thickness	2 mil
Visible Light Transmission	43%
UV Rejection	62%



ORDER PRODUCTS & SAMPLES 

Alternating Stripes SX-C378

Solyx® SX-C378 Alternating Stripes is a polyester film with alternating etch and white stripes that run vertically along the length of the roll, creating a two-tone effect. The stripes are 3.5mm wide with clear 2mm spacing between them.



SPECIFICATIONS

Product Code	SX-C378
Product Family	Geometric
Film Type	Polyester
Usage	Interior
Roll Width(s)	60"
Thickness	2.5 mil
Visible Light Transmission	66%
UV Rejection	53%



ORDER PRODUCTS & SAMPLES



Etched Stripes SX-C384

Solyx® SX-C384 Etched Stripes is a textured polyester striped film with alternating 1/16" etched and clear stripes which run the direction of the roll length. A simple and clean pattern perfect for privacy, decorative, or architectural applications.



SPECIFICATIONS

Product Code	SX-C384
Product Family	Geometric
Film Type	Polyester
Usage	Interior
Roll Width(s)	48"
Thickness	2 mil
Visible Light Transmission	60%
UV Rejection	41%



ORDER PRODUCTS & SAMPLES

Ribbed Glass Clear SX-9050

Solyx® SX-9050 Ribbed Glass Clear is an embossed polyester decorative privacy film with a $\frac{3}{8}$ " rib design running along the length of the roll, mimicking the look of fluted glass to achieve semi-privacy.



SPECIFICATIONS

Product Code	SX-9050
Product Family	Geometric
Film Type	Polyester
Usage	Interior
Roll Width(s)	60"
Thickness	2 mil
Visible Light Transmission	75%
UV Rejection	39%



ORDER PRODUCTS & SAMPLES 



Ribbed Glass Frosted SX-9060

Solyx® SX-9060 Ribbed Glass Frosted is an embossed polyester film with a $\frac{3}{16}$ " rib design running along the length of the roll. This product's frosted design makes it an ideal solution for obscuring direct visibility while allowing good light transmission.



SPECIFICATIONS

Product Code	SX-9060
Product Family	Geometric
Film Type	Polyester
Usage	Interior
Roll Width(s)	60"
Thickness	2 mil
Visible Light Transmission	38%
UV Rejection	63%



ORDER PRODUCTS & SAMPLES 

Organic Etch Stripes **SX-C380**

Solyx® SX-C380 Organic Etch Stripes is an attractive film with a vertically striped etch pattern on a transparent background. The stripe direction runs the length of the roll with stripes ranging in width from approximately 1/16" to 1/8".



SPECIFICATIONS

Product Code	SX-C380
Product Family	Geometric
Film Type	Polyester
Usage	Interior
Roll Width(s)	59"
Thickness	2.5 mil
Visible Light Transmission	64%
UV Rejection	42%



ORDER PRODUCTS & SAMPLES 



Frosted Strié **SGV-6613**

See a
SAMPLE
on
page 21

Solyx® SGV-6613 Frosted Strié is comprised of soft, frosted strié lines between 1mm and 7mm in thickness, embossed on translucent film. It is an attractive and durable film that provides semi-private distraction banding.

SPECIFICATIONS

Product Code	SGV-6613
Product Family	Geometric
Film Type	Vinyl
Usage	Interior
Roll Width(s)	48"
Thickness	3-4 mil
Visible Light Transmission	77%
UV Rejection	34%



ORDER PRODUCTS & SAMPLES 

Etchwhite Random Lines SX-C376

Solyx® SX-C376 Etchwhite Random Lines is a striped film with random etched and white stripes of between <1mm-5mm thickness which run down the length of the roll.



SPECIFICATIONS

Product Code	SX-C376
Product Family	Geometric
Film Type	Polyester
Usage	Interior
Roll Width(s)	48"
Thickness	2 mil
Visible Light Transmission	33%
UV Rejection	76%



ORDER PRODUCTS & SAMPLES 

White Random Lines SX-1801

See a
SAMPLE
on
page 23



Solyx® SX-1801 White Random Lines features a decorative line pattern in varying widths, opacities, and shades of white. This attractive design achieves an effective visual distraction with semi-private views, with lines running the entire length of the roll. It's a favorite for offices and architectural applications.



SPECIFICATIONS

Product Code	SX-1801
Product Family	Geometric
Film Type	Polyester
Usage	Interior
Roll Width(s)	60"
Thickness	2 mil
Visible Light Transmission	38%
UV Rejection	72%



ORDER PRODUCTS & SAMPLES 

Bronze Random Lines SX-1800

Solyx® SX-1800 Bronze Random Lines is a clear, durable, polyester film with a decorative line pattern in varying widths and shades of bronze and black, which runs down the length of the roll. An attractive solution offering semi-private visibility.



SPECIFICATIONS

Product Code	SX-1800
Product Family	Geometric
Film Type	Polyester
Usage	Interior
Roll Width(s)	60"
Thickness	2 mil
Visible Light Transmission	34%
UV Rejection	79%



ORDER PRODUCTS & SAMPLES 



White Stripes SX-2007

Solyx® SX-2007 White Stripes is a durable, optically clear polyester film with 12" frosted white stripes and 3" clear spacing running horizontally across the roll's width. The large stripes featured in this design make this film an excellent solution in areas where more privacy is desired.



SPECIFICATIONS

Product Code	SX-2007
Product Family	Geometric
Film Type	Polyester
Usage	Interior
Roll Width(s)	60"
Thickness	2.5 mil
Visible Light Transmission	13%
UV Rejection	91%



ORDER PRODUCTS & SAMPLES 

Acid Etch Stripes SX-C373

Solyx® SX-C373 Acid Etch Stripes is a durable, translucent vinyl film with a dusted matte surface and a pattern of ½" frosted etch stripes and 1" spacing, which runs horizontally across the width of the film. A soft and stylish solution, offering subtle privacy that blurs fine details without impacting overall visibility.

SPECIFICATIONS

Product Code	SX-C373
Product Family	Geometric
Film Type	Vinyl
Usage	Interior
Roll Width(s)	48"
Thickness	3 mil
Visible Light Transmission	53%
UV Rejection	85%



ORDER PRODUCTS & SAMPLES 



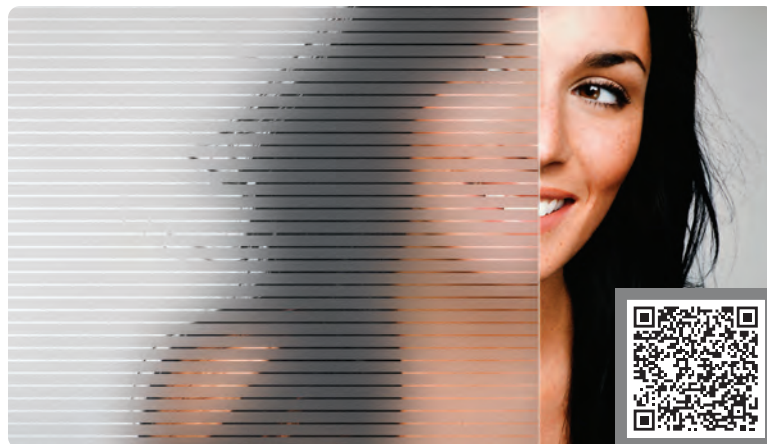
Frosted Stripes Horizontal SX-316132-H

Solyx® SX-316132 Frosted Stripes - Horizontal is a great film for subtle privacy with ¾" frosted stripes and ½" clear spacing. The stripes run horizontally across the width of the roll.

SPECIFICATIONS



Product Code	SX-316132-Horizontal
Product Family	Geometric
Film Type	Polyester
Usage	Interior
Roll Width(s)	48"
Thickness	2 mil
Visible Light Transmission	53%
UV Rejection	70%



ORDER PRODUCTS & SAMPLES 

White Frosted Stripes **SXC-1419**

Solyx® SXC-1419 White Frosted Stripes – ¼" stripe, ½" clear is a durable, optically clear POLYESTER film with alternating ¼" frosted stripes and 1/8" clear spacing running across the width of the roll.



SPECIFICATIONS

Product Code	SXC-1419
Product Family	Geometric
Film Type	Polyester
Usage	Interior
Roll Width(s)	48"
Thickness	2.5 mil
Visible Light Transmission	74%
UV Rejection	47%



ORDER PRODUCTS & SAMPLES 



White Frosted Mini Blind **SX-3006**

Solyx® SX-3006 White Frosted Mini Blind is a frosted, translucent film with a matte surface. The mini blind pattern comprises ¾" gradient horizontal stripes that fade to clear on frosted embossed vinyl. It is an effective privacy solution with minimal direct visibility yet ample light transmission.

SPECIFICATIONS

Product Code	SX-3006
Product Family	Geometric
Film Type	Vinyl
Usage	Interior
Roll Width(s)	24", 35", 59"
Thickness	5 mil
Visible Light Transmission	36%
UV Rejection	99%



ORDER PRODUCTS & SAMPLES 

Pixela SX-C386

Solyx® SX-C386 Pixela is an attractive architectural film with a repeated pixelated rectangle pattern on a clear, transparent background. Each $1\frac{1}{4}$ " x $\frac{1}{2}$ " rectangle is comprised of 22 tiny white matte rectangles. Between rectangles, the horizontal spacing measures $\frac{1}{8}$ " and the vertical spacing measures $\frac{1}{4}$ ". Provides a soft and subtle obscurity to glass panels or windows.



SPECIFICATIONS

Product Code	SX-C386
Product Family	Geometric
Film Type	Polyester
Usage	Interior
Roll Width(s)	48"
Thickness	2.5 mil
Visible Light Transmission	71%
UV Rejection	38%



ORDER PRODUCTS & SAMPLES 



Master Ray SGV-6601

Solyx SimGlas® SGV-6601 Master Ray is an attractive, frosty film designed to simulate Master Ray Glass. The pattern features repeated, clear 1 " x $\frac{1}{8}$ " rectangles separated by $\frac{3}{16}$ " spacing.

SPECIFICATIONS

Product Code	SGV-6601
Product Family	Geometric
Film Type	Vinyl
Usage	Interior
Roll Width(s)	48"
Thickness	5 mil
Visible Light Transmission	84%
UV Rejection	59%



ORDER PRODUCTS & SAMPLES 

Paracelli Mini Blind **SX-C375**

Solyx® SX-C375 Paracelli Mini Blind is an attractive, transparent film with a repeated 2 ¾" x 1/8" white matte rectangle pattern with 1/8" clear vertical spacing that creates the illusion of mini blinds.



SPECIFICATIONS

Product Code	SX-C375
Product Family	Geometric
Film Type	Polyester
Usage	Interior
Roll Width(s)	60"
Thickness	2.5 mil
Visible Light Transmission	49%
UV Rejection	60%



ORDER PRODUCTS & SAMPLES



Frosted Short Stripe Mini Blind – Vertical **SXC-131-60**

Solyx® SXC-131-60 Frosted Short Stripe Mini Blind – Vertical is an attractive, vertically striped, patterned film with a transparent background. The etched rectangles measure 7mm x 42mm and are separated by 3mm clear spacing. The direction of the rectangular pattern runs down the length of the roll.



SPECIFICATIONS

Product Code	SXC-131-60
Product Family	Geometric
Film Type	Polyester
Usage	Interior
Roll Width(s)	60"
Thickness	2 mil
Visible Light Transmission	67%
UV Rejection	55%



ORDER PRODUCTS & SAMPLES

Chicago SX-9100

SOLYX® SX-9100 Chicago is a durable, clear, polyester film with a random pattern of variously sized frosted rectangles that runs down the length of the roll. It is recommended for application to interior glass, single- or double-pane, and exterior-facing glass. This film is also suitable for wet environments. It is supplied with a silicone coated liner which protects the clear, pressure-sensitive adhesive and is ideal for decorative or architectural applications.

SPECIFICATIONS



Product Code	SX-9100
Product Family	Geometric
Film Type	Polyester
Usage	Interior
Roll Width(s)	60"
Thickness	2 mil
Visible Light Transmission	56%
UV Rejection	50%



ORDER PRODUCTS & SAMPLES 



Gotham SX-3148

SOLYX® SX-3148 Gotham has a random pattern of variously sized white matte rectangles on a matte background. Made of durable, optically clear polyester film, it is supplied with a silicone coated liner which protects the clear, pressure-sensitive adhesive. This film is recommended for application to both interior and exterior glass and is excellent for privacy, decorative, or architectural applications.

SPECIFICATIONS



Product Code	SX-3148
Product Family	Geometric
Film Type	Polyester
Usage	Interior and Exterior
Roll Width(s)	24", 36", 60"
Thickness	2.5 mil
Visible Light Transmission	66%
UV Rejection	98%



ORDER PRODUCTS & SAMPLES 

Burlap Stripe SGC-55

Solyx SimGlase® SGC-55 Burlap Stripe is a lightly textured, transparent film made from durable polyester that provides a softened, distorted view. In this design, textured stripes evoke a sense of warmth and privacy, creating a cozy atmosphere and elongated visual effect in any room. A beautiful decorative finish for interior walls, doors, and more.



SPECIFICATIONS

Product Code	SGC-55
Product Family	Geometric
Film Type	Polyester
Usage	Interior
Roll Width(s)	60"
Thickness	2 mil
Visible Light Transmission	75%
UV Rejection	99%



ORDER PRODUCTS & SAMPLES



Thatch Frost SX-1580

See a
SAMPLE
on
page 31

SOLYX® SX-1580 Thatch Frost is an attractive, embossed film made of durable vinyl with a simple thatch pattern of clear, intersecting lines on a frosted background. Supplied with a silicone coated liner which protects the clear, pressure-sensitive adhesive, this film is recommended for application to interior and exterior glass. It is ideal for privacy, decorative, or architectural applications, providing excellent semi-private distraction.

SPECIFICATIONS

Product Code	SX-1580
Product Family	Geometric
Film Type	Vinyl
Usage	Interior and Exterior
Roll Width(s)	48"
Thickness	3-4 mil
Visible Light Transmission	32%
UV Rejection	99%



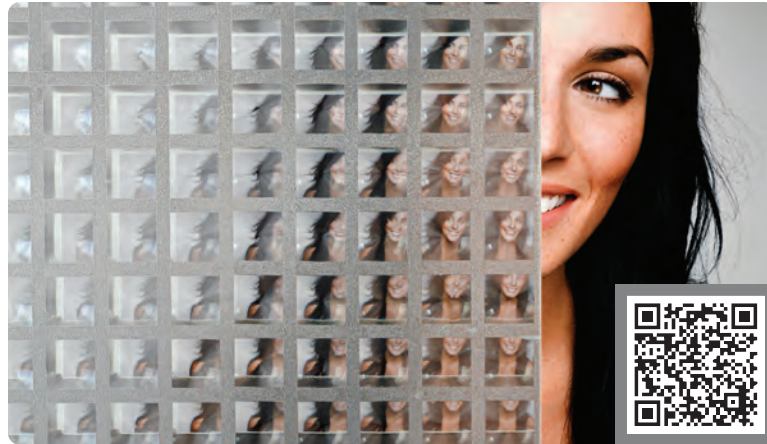
ORDER PRODUCTS & SAMPLES

Fresnel Squares SX-1710

Solyx® SX-1710 Fresnel Squares is a clear, embossed film with a pattern of $\frac{3}{4}$ " Fresnel squares separated by $\frac{1}{4}$ " frosted lines. The special effect is achieved by framing the Fresnel lenses with etched lines that sparkle in the light. A visually interesting film offering semi-privacy.

SPECIFICATIONS

Product Code	SX-1710
Product Family	Geometric
Film Type	Vinyl
Usage	Interior
Roll Width(s)	60"
Thickness	4 mil
Visible Light Transmission	45%
UV Rejection	79%



ORDER PRODUCTS & SAMPLES 



Clear Frosted Squares SXG-9118

Solyx® SXG-9118 Clear Frosted Squares is a vinyl film with $1\frac{1}{16}$ " frosted squares separated by $\frac{1}{16}$ " clear spacing. It is an ideal film for obscuring visibility while allowing excellent light transmission.

SPECIFICATIONS

Product Code	SXG-9118
Product Family	Geometric
Film Type	Vinyl
Usage	Interior
Roll Width(s)	48"
Thickness	2 mil
Visible Light Transmission	88%
UV Rejection	27%



ORDER PRODUCTS & SAMPLES 

Frosted Squares SX-22564

Solyx® SX-22564 Frosted Squares is a polyester film with a pattern of 2 ¼" squares comprised of 64, ¼" frosted squares. The larger squares are separated by ⅛" clear spacing. A great choice for subtle privacy.



SPECIFICATIONS

Product Code	SX-22564
Product Family	Geometric
Film Type	Polyester
Usage	Interior
Roll Width(s)	48"
Thickness	2 mil
Visible Light Transmission	55%
UV Rejection	67%



ORDER PRODUCTS & SAMPLES



Frosted Squares SXC- 4410

See a
SAMPLE
on
page 25

Solyx® SXC-4410 Frosted Squares is a beautiful polyester film comprised of 1 1¼" frosted squares separated by ⅜" clear spacing. The symmetry of the frosted squares and sizable clear gridding make this product an ideal solution for obscuring direct visibility without impacting light transmission.



SPECIFICATIONS

Product Code	SGV-6613
Product Family	Geometric
Film Type	Polyester
Usage	Interior
Roll Width(s)	60"
Thickness	2.5 mil
Visible Light Transmission	29%
UV Rejection	42%



ORDER PRODUCTS & SAMPLES

Matte Grey Squares SX-4800

Solyx® SX-4800 Matte Grey Squares is a translucent polyester film with a 1 1/4" square pattern and 3/8" semi-clear spacing in a matte finish. This film offers great privacy, effectively obscuring views while still allowing ample light transmission.



SPECIFICATIONS

Product Code	SX-4800
Product Family	Geometric
Film Type	Polyester
Usage	Interior
Roll Width(s)	60"
Thickness	2 mil
Visible Light Transmission	13%
UV Rejection	77%



ORDER PRODUCTS & SAMPLES 



Cool Grey Matte Squares SX-4647

Solyx® SX-4647 Cool Grey Matte Squares is a translucent matte film with a 1 3/4" light grey square pattern and 3/8" semi-clear spacing. This soft, symmetrical design achieves exceptional privacy while facilitating ample light transmission.



SPECIFICATIONS

Product Code	SX-4647
Product Family	Geometric
Film Type	Polyester
Usage	Interior
Roll Width(s)	60"
Thickness	2 mil
Visible Light Transmission	20%
UV Rejection	84%



ORDER PRODUCTS & SAMPLES 

Grey Squares SX-4802

Solyx® SX-4802 Grey Squares is a glossy, translucent film with a pattern of 1 1/4" grey squares and 3/8" clear spacing. This classic decorative design adds semi-privacy to doors, partitions, glass panel walls, and any surface where visual interest is desired.



SPECIFICATIONS

Product Code	SX-4802
Product Family	Geometric
Film Type	Polyester
Usage	Interior
Roll Width(s)	48", 60"
Thickness	2 mil
Visible Light Transmission	47%
UV Rejection	59%



ORDER PRODUCTS & SAMPLES 



Sand Blast Squares SX-1700

Solyx® SX-1700 Sand Blast Squares is a durable polypropylene vinyl film with a beautifully decorated textured pattern of squares that sparkle in the sunlight. The squares measure 1 1/8" with 1/8" clear spacing. The tight grid pattern makes this film perfect for obscuring direct visibility while allowing excellent light transmission.

SPECIFICATIONS

Product Code	SX-1700
Product Family	Geometric
Film Type	Vinyl
Usage	Interior
Roll Width(s)	60"
Thickness	4 mil
Visible Light Transmission	58%
UV Rejection	63%



ORDER PRODUCTS & SAMPLES 

Etched Squares 1 3/16" SX-C385

SOLYX® SX-SC385 Etched Squares 1 3/16" is a smooth patterned film with 1 3/16" etched squares, 1/16" clear spacing, and tiny etched squares at the intersections of the clear spacing. This film is supplied with a silicone coated liner and pressure-sensitive adhesive and is perfect for privacy, decorative, or architectural applications.



SPECIFICATIONS

Product Code	SX-C385
Product Family	Geometric
Film Type	Polyester
Usage	Interior
Roll Width(s)	48", 60"
Roll Length	100'
Thickness	2 mil
Visible Light Transmission	55%
UV Rejection	47%



ORDER PRODUCTS & SAMPLES 



Frosted Squares SX-1164

Solyx® SX-1164 Frosted Squares is a textured, polyester film with a 7/8" frosted square pattern and 1/16" clear spacing. Within each 7/8" square are 64 tiny squares. This film is ideal for semi-privacy while still allowing excellent light transmission.



SPECIFICATIONS

Product Code	SX-1164
Product Family	Geometric
Film Type	Polyester
Usage	Interior
Roll Width(s)	48"
Thickness	2 mil
Visible Light Transmission	70%
UV Rejection	53%



ORDER PRODUCTS & SAMPLES 

Two Tone Squares SX-5013

Solyx® SX-5013 Two Tone Squares is a durable, optically clear, polyester patterned film of 2" white squares separated by ¼" clear spacing with inner squares that are slightly lighter in color and measure 7⁄8" surrounded by a 1⁄8" clear border.



SPECIFICATIONS

Product Code	SX-5013
Product Family	Geometric
Film Type	Polyester
Usage	Interior
Roll Width(s)	48"
Thickness	2.5 mil
Visible Light Transmission	4%
UV Rejection	64%



ORDER PRODUCTS & SAMPLES 



Gridlock SGD-6007

Solyx SimGlas® SGD-6007 Gridlock is a durable, dimensionally stable, translucent film with a semi-transparent interlocking ¾" square pattern.



SPECIFICATIONS

Product Code	SGD-6007
Product Family	Geometric
Film Type	Polyester
Usage	Interior
Roll Width(s)	58"
Thickness	2 mil
Visible Light Transmission	82%
UV Rejection	95%



ORDER PRODUCTS & SAMPLES 

Frosted Ice Cubes **SGV-6610**

Solyx SimGlas® SGV-6610 Frosted Ice Cubes is made of durable, polymeric PVC film with a semi-transparent pattern of ¼" squares separated by ⅜" frosted spacing. An attractive and durable film that offers visual distraction without impacting visible light transmission.

SPECIFICATIONS

Product Code	SGV-6610
Product Family	Geometric
Film Type	Vinyl
Usage	Interior
Roll Width(s)	48"
Thickness	5 mil
Visible Light Transmission	83%
UV Rejection	28%



ORDER PRODUCTS & SAMPLES 



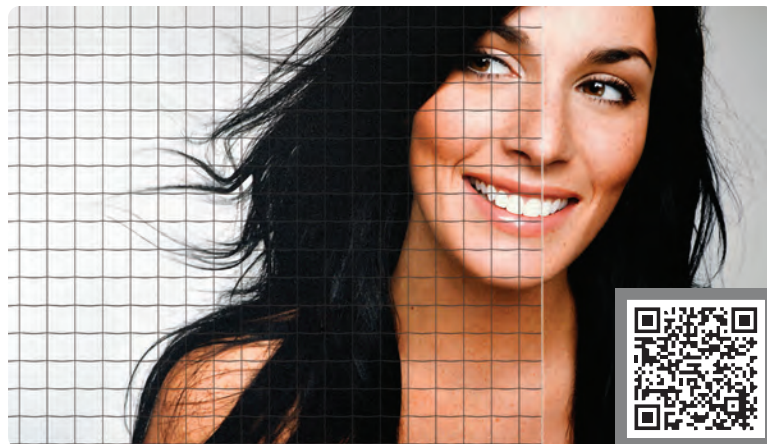
Wire Glass **SX-1212**

Solyx® SX-1212 Wire Glass is a transparent polyester film with a decorative ½" square design simulating wire encapsulated safety glass. Great for residential and commercial application, such as doors, windows, and glass front cabinetry.

SPECIFICATIONS



Product Code	SX-1212
Product Family	Geometric
Film Type	Polyester
Usage	Interior
Roll Width(s)	60"
Thickness	4 mil
Visible Light Transmission	82%
UV Rejection	99%



ORDER PRODUCTS & SAMPLES 

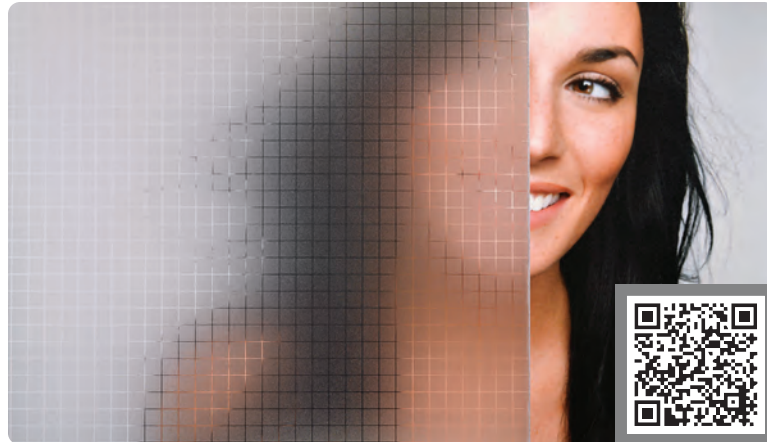
Frosted Squares SX-932932

Solyx® SX-932932 Frosted Squares is a polyester film with a ½" frosted square pattern. A great film for subtle privacy, with soft, repeating squares separated by delicate clear lines.



SPECIFICATIONS

Product Code	SX-932932
Product Family	Geometric
Film Type	Polyester
Usage	Interior
Roll Width(s)	48"
Thickness	2 mil
Visible Light Transmission	55%
UV Rejection	67%



ORDER PRODUCTS & SAMPLES 



White Cubes SX-C372

Solyx® SX-C372 White Cubes is a beautiful polyester film with a pattern of ½" white cubes stacked on top of one another on a clear background. This effect creates an optical illusion, creating 3-dimensional depth on a 2-D surface. Ideal for semi obscuring direct visibility while providing a sense of openness.



SPECIFICATIONS

Product Code	SX-C372
Product Family	Geometric
Film Type	Polyester
Usage	Interior
Roll Width(s)	47"
Thickness	2 mil
Visible Light Transmission	50%
UV Rejection	55%



ORDER PRODUCTS & SAMPLES 

Cut Glass Mosaic SX-1513



Solyx® SX-1513 Cut Glass Mosaic is a colorless, embossed vinyl film that refracts light between soft, translucent $\frac{3}{8}$ " squares. The tile-like textured design scatters visible light to create a beautiful prismatic effect that changes with the angle and time of day. It is an excellent solution for obscuring direct visibility while facilitating excellent light transmission. This film is also available in a static cling version, SX-SC513 Mosaic.

SPECIFICATIONS

Product Code	SX-1513
Product Family	Geometric
Film Type	Vinyl
Usage	Interior
Roll Width(s)	24", 48"
Thickness	10 mil
Visible Light Transmission	36%
UV Rejection	81%



ORDER PRODUCTS & SAMPLES 



Big City Lights SX-1523

Solyx® SX-1523 Big City Lights is a durable, embossed vinyl film with a textured $\frac{7}{32}$ " square pattern. Light is refracted in different directions, creating a scattered light effect. The small squares are $\frac{1}{4}$ " x $\frac{1}{4}$ ". An ideal choice for obscuring direct visibility while allowing good light transmission.

SPECIFICATIONS

Product Code	SX-1523
Product Family	Geometric
Film Type	Vinyl
Usage	Interior
Roll Width(s)	48"
Thickness	8 mil
Visible Light Transmission	45%
UV Rejection	82%



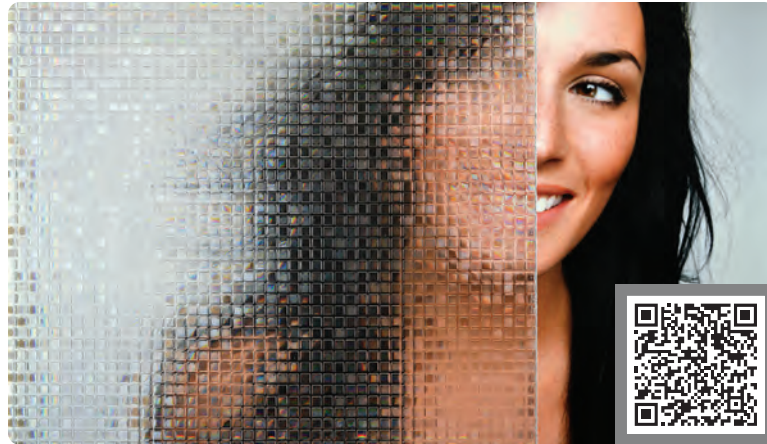
ORDER PRODUCTS & SAMPLES 

Pixels SX-1462

Solyx® SX-1462 Pixels is a durable adhesive film with an embossed, textured, prismatic pixel design using $\frac{3}{16}$ " squares. This sparkling privacy film scatters light and distorts views, effectively obscuring direct visibility while allowing excellent light transmission. Also available as a non-adhesive static cling, SX-SC462 and grey-toned SX-SC558 Titanium Pixels.

SPECIFICATIONS

Product Code	SX-1462
Product Family	Geometric
Film Type	Vinyl
Usage	Interior
Roll Width(s)	35"
Visible Light Transmission	73%
UV Rejection	76%



ORDER PRODUCTS & SAMPLES 



Glass Block 6" SX-1257

Solyx® SX-1257 6-Inch Glass Block is a lightly textured, semi-transparent film made from durable polyester that closely resembles 6" real glass blocks. This timeless pattern of wavy glass provides a distorted privacy view.

SPECIFICATIONS

Product Code	SX-1257
Product Family	Geometric
Film Type	Polyester
Usage	Interior
Roll Width(s)	54"
Thickness	2 mil
Visible Light Transmission	90%
UV Rejection	99%



ORDER PRODUCTS & SAMPLES 

Glass Block 4" SX-1258

Solyx® SX-1258 4-Inch Glass Block is a lightly textured, semi-transparent film made from durable polyester that closely resembles 4" real glass blocks. This timeless pattern of wavy glass provides a distorted privacy view.



SPECIFICATIONS

Product Code	SX-1258
Product Family	Geometric
Film Type	Polyester
Usage	Interior
Roll Width(s)	54"
Thickness	2 mil
Visible Light Transmission	90%
UV Rejection	99%



ORDER PRODUCTS & SAMPLES 



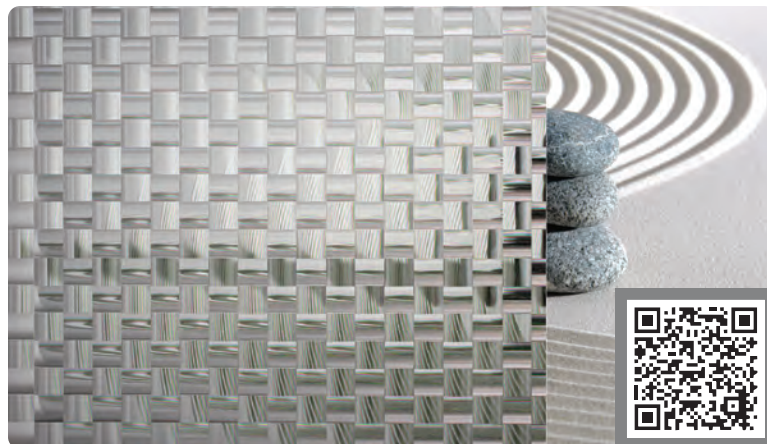
Crystal Weave 1/2" SX-1281

Solyx SimGlas® SX-1281 Crystal Weave 1/2" is an embossed polyester film designed to resemble cut crystal in an elegant weave configuration. The pattern consists of blocks, each measuring 1/2 inch.



SPECIFICATIONS

Product Code	SX-1281
Product Family	Geometric
Film Type	Polyester
Usage	Interior
Roll Width(s)	60"
Thickness	2 mil
Visible Light Transmission	92%
UV Rejection	98%



ORDER PRODUCTS & SAMPLES 

Crystal Weave 1" SX-1282

Solyx SimGlas® SX-1282 Crystal Weave 1" is an embossed polyester film designed to resemble cut crystal in an elegant weave configuration. The pattern consists of blocks, each measuring 1 inch.

SPECIFICATIONS



Product Code	SX-1282
Product Family	Geometric
Film Type	Polyester
Usage	Interior
Roll Width(s)	60"
Thickness	2 mil
Visible Light Transmission	65%
UV Rejection	98%



ORDER PRODUCTS & SAMPLES



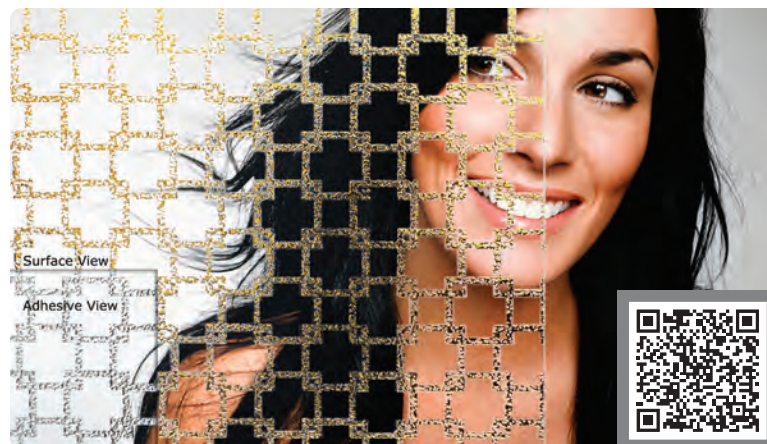
Gridlock Gold SGC-05

Solyx SimGlas® SGC-05 Gridlock Gold features overlapping squares highlighted with lightly textured gold embossing, creating a metallic effect. Designed as more of an accent to glass, this pattern offers a softened, distorted view, providing a low level of privacy.

SPECIFICATIONS



Product Code	SGC-05
Product Family	Geometric
Film Type	Polyester
Usage	Interior
Roll Width(s)	59"
Thickness	2 mil
Visible Light Transmission	43%
UV Rejection	1%



ORDER PRODUCTS & SAMPLES

Frosted Rectangles SX-14316

Solyx® SX-14316 Frosted Rectangles is a polyester film with ¼" x ¾" frosted rectangles arranged horizontally and vertically to create a unique patterned illusion.



SPECIFICATIONS

Product Code	SX-14316
Product Family	Geometric
Film Type	Polyester
Usage	Interior
Roll Width(s)	48"
Thickness	2 mil
Visible Light Transmission	68%
UV Rejection	68%



ORDER PRODUCTS & SAMPLES 



Merchant SGC-25

Solyx SimGlas® SGC-25 Merchant combines hammered and ribbed glass elements, resulting in a delicate yet visually interesting pattern with refined privacy. Designed as more of an accent to glass, this film offers a softened, distorted view, providing a low level of privacy and exceptional visual interest.



SPECIFICATIONS

Product Code	SGC-25
Product Family	Geometric
Film Type	Polyester
Usage	Interior
Roll Width(s)	60"
Thickness	2 mil
Visible Light Transmission	43%
UV Rejection	1%



ORDER PRODUCTS & SAMPLES 

Spheres SX-1720

Solyx® SX-1720 Spheres is a clear, embossed film with a pattern of textured, translucent, frosted 1 ½" circles; textured, clear 1" circles; and ½" clear Fresnel circles decoratively interspersed throughout.

SPECIFICATIONS

Product Code	SX-1720
Product Family	Geometric
Film Type	Vinyl
Usage	Interior
Roll Width(s)	60"
Thickness	4 mil
Visible Light Transmission	52%
UV Rejection	65%



ORDER PRODUCTS & SAMPLES 



Pin Point SX-C333

Solyx® SX-C333 Pin Point is an attractive, architectural, white matte film with a pattern of closely mapped, clear, ⅛" dots with a pin point clear reveal. Simple, yet sophisticated, with semi-private visibility.

SPECIFICATIONS



Product Code	SX-C333
Product Family	Geometric
Film Type	Polyester
Usage	Interior
Roll Width(s)	48" & 60"
Thickness	2.5 mil
Visible Light Transmission	9%
UV Rejection	96%



ORDER PRODUCTS & SAMPLES 

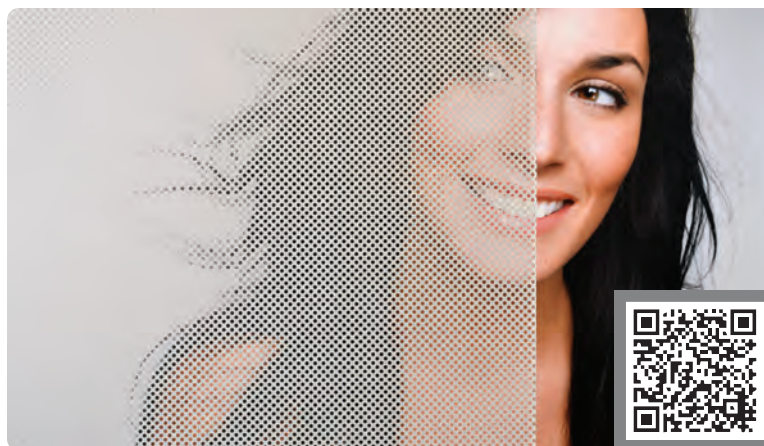
Dot Screen 16 SX-C362

Solyx® SX-C362 Dot Screen 16 is made of durable, optically clear POLYESTER film with a 1/16" clear dot design on a frosted white background to simulate the look of a white screen.



SPECIFICATIONS

Product Code	SX-C362
Product Family	Geometric
Film Type	Polyester
Usage	Interior
Roll Width(s)	48" & 60"
Thickness	2.5 mil
Visible Light Transmission	27%
UV Rejection	78%



ORDER PRODUCTS & SAMPLES 



Dot Screen 18 SX-C370

Solyx® SX-C370 Dot Screen 18 is a white frosted film with a diagonally arranged pattern of 1/8" clear dots with 3/32" spacing.



SPECIFICATIONS

Product Code	SX-C370
Product Family	Geometric
Film Type	Polyester
Usage	Interior
Roll Width(s)	48"
Thickness	2.5 mil
Visible Light Transmission	24%
UV Rejection	78%



ORDER PRODUCTS & SAMPLES 

Dots SXD-1616

Solyx® SXD-1616 Dots is a durable, dimensionally stable polyester film with a $\frac{1}{16}$ " white dot pattern and $\frac{1}{16}$ " clear spacing. Please note: the film is 60" wide; however, the dot pattern on the film is 59" wide.



SPECIFICATIONS

Product Code	SXD-1616
Product Family	Geometric
Film Type	Polyester
Usage	Interior
Roll Width(s)	60"
Thickness	2 mil
Visible Light Transmission	59%
UV Rejection	74%



ORDER PRODUCTS & SAMPLES 



Dots SXD-1818

Solyx® SXD-1818 Dots is a durable, dimensionally stable polyester film with a $\frac{1}{8}$ " frosted dot pattern and $\frac{1}{8}$ " clear spacing. Designed on an optically clear film, the dots provide an effective visual distractor without impacting light or overall visibility.



SPECIFICATIONS

Product Code	SXD-1818
Product Family	Geometric
Film Type	Polyester
Usage	Interior
Roll Width(s)	48"
Thickness	2 mil
Visible Light Transmission	51%
UV Rejection	32%



ORDER PRODUCTS & SAMPLES 

Swiss SX-C391

Solyx® SX-C391 Swiss is a white matte film with a diagonally arranged dot screen pattern of $\frac{3}{32}$ " clear dots with $\frac{1}{4}$ " spacing. This product is ideal for partially obscuring direct visibility while allowing excellent light transmission.



SPECIFICATIONS

Product Code	SX-C391
Product Family	Geometric
Film Type	Polyester
Usage	Interior
Roll Width(s)	60"
Thickness	2 mil
Visible Light Transmission	53%
UV Rejection	95%



ORDER PRODUCTS & SAMPLES 

Alps SX-C392

Solyx® SX-C392 Alps is a semi-transparent, dot screen pattern on a lightly etched film. The optically clear, diagonally arranged design features $\frac{1}{8}$ " dots with $\frac{1}{4}$ " spacing, offering semi-transparency and visual interest in any space.



SPECIFICATIONS

Product Code	SX-C392
Product Family	Geometric
Film Type	Polyester
Usage	Interior
Roll Width(s)	60"
Thickness	2 mil
Visible Light Transmission	30%
UV Rejection	76%



ORDER PRODUCTS & SAMPLES 

Etched Dot Solid **SXJ-0584**

Solyx® SXJ-0584 Etched Dot Solid is a lightly textured etched polyester film with a dot pattern which is semi-opaque, effectively blurring the viewing area while allowing ample light transmission.

SPECIFICATIONS



Product Code	SXJ-0584
Product Family	Geometric
Film Type	Polyester
Usage	Interior
Roll Width(s)	58"
Thickness	2 mil
Visible Light Transmission	46%
UV Rejection	98%



ORDER PRODUCTS & SAMPLES



Glazed Circles **SGD-6008**

Solyx SimGlas® SGD-6008 Glazed Circles is a durable, dimensionally stable, translucent film with a glazed circle pattern atop a dusted crystal-like background which gives the appearance of etched glass. The circle diameter is approximately 3".

SPECIFICATIONS



Product Code	SGD-6008
Product Family	Geometric
Film Type	Polyester
Usage	Interior
Roll Width(s)	58"
Thickness	2 mil
Visible Light Transmission	69%
UV Rejection	93%



ORDER PRODUCTS & SAMPLES

Coventry SGC-6523

Solyx SimGlas® SGC-6523 Coventry is a durable polyester film that beautifully simulates European black iron grill work on old, hammered glass. The baguette pattern is 6" x 3", and the diamond measures 1" x 1".

SPECIFICATIONS



Product Code	SGC-6523
Product Family	Geometric
Film Type	Polyester
Usage	Interior
Roll Width(s)	58"
Thickness	2 mil
Visible Light Transmission	59%
UV Rejection	37%



ORDER PRODUCTS & SAMPLES 



Structure SX-C371

SOLYX® SX-C371 Structure is a beautiful polyester film with a white frosted pattern on a clear background. The diameter of the white circle in the pattern is 3/8". This film has a silicone coated liner with a pressure-sensitive adhesive and is ideal for privacy, decorative, or architectural applications.

SPECIFICATIONS



Product Code	SX-C371
Product Family	Geometric
Film Type	Polyester
Usage	Interior
Roll Width(s)	48"
Thickness	2 mil
Visible Light Transmission	56%
UV Rejection	79%



ORDER PRODUCTS & SAMPLES 

Fleur De Lis **SGV-6614**

Solyx SimGlas® SGV-6614 Fleur De Lis is a durable, frosty, polymeric PVC film with a semi-clear 1 ½" x 2" fleur-de-lis (lily flower) pattern. An elegant and alluring design, offering semi-private views and visual interest.

SPECIFICATIONS

Product Code	SGV-6614
Product Family	Geometric
Film Type	Vinyl
Usage	Interior
Roll Width(s)	48"
Thickness	5 mil
Visible Light Transmission	83%
UV Rejection	61%



ORDER PRODUCTS & SAMPLES 



Cut Glass Neptune **SX-1109**

Solyx® SX-1109 Cut Glass Neptune is a beautiful, translucent, embossed film with a textured facet design that creates a prismatic effect, scattering light to create a distorted view. It is an excellent privacy film, offering visual interest while still providing ample light transmission and visual distortion.

SPECIFICATIONS

Product Code	SX-1109
Product Family	Geometric
Film Type	Vinyl
Usage	Interior
Roll Width(s)	48"
Thickness	±8 mil
Visible Light Transmission	69%
UV Rejection	76%



ORDER PRODUCTS & SAMPLES 

Frosted Jacks SXW-08

Solyx® SXW-08 Frosted Jacks is a translucent, embossed, frosted film featuring a black “jacks” pattern. The jacks range in size from approximately 2" to 4". It is an effective privacy film that obscures direct visibility while allowing excellent light transmission.

SPECIFICATIONS

Product Code	SXW-08
Product Family	Geometric
Film Type	Vinyl
Usage	Interior
Roll Width(s)	48"
Thickness	3-4 mil
Visible Light Transmission	38%
UV Rejection	65%



ORDER PRODUCTS & SAMPLES 



Crystal Jacks SX-1552

Solyx® SX-1552 Crystal Jacks frosted film with a semi-clear “jacks” pattern. The jacks range in size from approximately 1" to 2". Obscures direct visibility while still allowing ample light transmission.

SPECIFICATIONS

Product Code	SX-1552
Product Family	Geometric
Film Type	Vinyl
Usage	Interior
Roll Width(s)	48"
Thickness	3-4 mil
Visible Light Transmission	84%
UV Rejection	29%



ORDER PRODUCTS & SAMPLES 

Geometric SX-3150

Solyx® SX-3150 Geometric is an attractive, architectural pattern of bisected 9mm white matte triangles creating a diamond effect. It is ideal for providing semi-obscure privacy and good light transmission.

SPECIFICATIONS



Product Code	SX-3150
Product Family	Geometric
Film Type	Polyester
Usage	Interior
Roll Width(s)	60"
Thickness	2.5 mil
Visible Light Transmission	37%
UV Rejection	79%



ORDER PRODUCTS & SAMPLES 



Rhombus SX-1730

Solyx® SX-1730 Rhombus is a beautiful, frosted adhesive-backed film featuring a glass-like Rhombus lattice pattern. This film is translucent/transparent, textured, and embossed, with 1" frosted rhombuses and ¼" clear spacing. A classic design with good privacy and exceptional light transmission.

SPECIFICATIONS

Product Code	SX-1730
Product Family	Geometric
Film Type	Vinyl
Usage	Interior
Roll Width(s)	24", 48"
Thickness	4 mil
Visible Light Transmission	80%
UV Rejection	62%



ORDER PRODUCTS & SAMPLES 

Frosted Lattice SX-1550

Solyx® SX-1550 Frosted Lattice is a translucent, frosted film with an embossed black lattice pattern. The diamond shape created by the lattice measures 6" x 3". This is an effective privacy film that obscures direct visibility while allowing excellent light transmission.

SPECIFICATIONS

Product Code	SX-1550
Product Family	Geometric
Film Type	Vinyl
Usage	Interior and Exterior
Roll Width(s)	48"
Thickness	3-4 mil
Visible Light Transmission	67%
UV Rejection	47%



ORDER PRODUCTS & SAMPLES 



Crystal Lattice SX-1551

Solyx® SX-1551 Crystal Lattice is a translucent, frosted film with an embossed semi-clear lattice pattern. The diamond shapes created by the lattice measure 6" x 3". This is an effective privacy film that obscures direct visibility while allowing excellent light transmission.

SPECIFICATIONS

Product Code	SX-1551
Product Family	Geometric
Film Type	Vinyl
Usage	Interior
Roll Width(s)	48"
Thickness	3-4 mil
Visible Light Transmission	71%
UV Rejection	34%



ORDER PRODUCTS & SAMPLES 

Olde English SGD-6011

Solyx SimGlas® SGD-6011 Olde English is a beautiful simulation of old hammered glass with an English style iron lattice design. The diamonds created by the lattice measure 6" x 3". This film provides a slightly distorted view, offering minimal privacy with a stunning textured glass effect. A durable, high-quality solution to glass, this film adds great architectural interest to cabinets, front doors, room dividers, and other decorative applications.

SPECIFICATIONS



Product Code	SGD-6011
Product Family	Geometric
Film Type	Polyester
Usage	Interior
Roll Width(s)	58"
Thickness	2 mil
Visible Light Transmission	85%
UV Rejection	50%



ORDER PRODUCTS & SAMPLES



Frosted Diamond SGV-6608

Solyx SimGlas® SGV-6608 Frosted Diamond is a durable, polymeric PVC film with 5mm frosted diamonds and 1mm clear spacing. It effectively obscures visibility while allowing excellent light transmission.

SPECIFICATIONS

Product Code	SGV-6608
Product Family	Geometric
Film Type	Vinyl
Usage	Interior
Roll Width(s)	48"
Thickness	5 mil
Visible Light Transmission	81%
UV Rejection	30%



ORDER PRODUCTS & SAMPLES



Fill this pocket
with great ideas
and inspiration.

Get your
free samples at



Design Notes

Project: _____

Date: _____

Decorative Film: _____

Notes: _____

Project: _____

Date: _____

Decorative Film: _____

Notes: _____

Project: _____

Date: _____

Decorative Film: _____

Notes: _____

Project: _____

Date: _____

Decorative Film: _____

Notes: _____

Project: _____

Date: _____

Decorative Film: _____

Notes: _____

Post a photo
on Instagram!

@DECORATIVEFILMS

#DECORATIVEFILMSDIY



Project: _____

Date: _____

Decorative Film: _____

Notes: _____

Project: _____

Date: _____

Decorative Film: _____

Notes: _____

Project: _____

Date: _____

Decorative Film: _____

Notes: _____



Thank you for trusting Decorative Films with your decorative privacy needs.

See what awaits you in our other collections at decorativefilm.com.



A Specialized Function
SX-BSFH
Bird Safety Horizontal

B Organic
SX-3141
Dusted Leaf

C Frosted & Design-Free
SX-1002
Clear Sand Blast

D Organic
SX-6040
Antique Mirror

E Gradient
SXJ-0585
Dual Motion

GIVE GLASS NEW LIFE



Our products are proudly designed
and fabricated in Frederick, MD.

Find inspiration
from customers
like you at:



Post a photo
on Instagram!

@DECORATIVEFILMS
#DECORATIVEFILMSPRO 

MANUFACTURER OF
DECORATIVE PRIVACY WINDOW FILMS

decorativefilms 